



Woodworking Education Center  
10544 Hwy 17, Maylene, AL 35114

Alabama Woodworkers Guild

# Guild News



[www.alabamawoodworkersguild.org](http://www.alabamawoodworkersguild.org)

Volume XXXVI Number 2

February, 2017

## Next Meeting

**The next  
scheduled  
meeting is  
February 18**

## In This Issue

Meeting	
Program	p. 2
Shop Calendar	p. 3
Mentoring	p. 5
WEC Directions	p. 7

## President's Message

First, I want to apologize to those that brought "Show and Tell" items to share with us at the past Guild Meeting and could not as the meeting agenda was too long to allow time for it this month. I appreciate your understanding and hope you will share with the group this month!

What a turnout we had for our kickoff meeting for 2017! Thank you Larry Taylor for leading the mentoring program as it was very informative! Congratulations to all the winners of the Annual Show! Thank you for those that participated in the show as you all are winners!

Wasn't it great that we had so many new members and visitors attending. In January, 32 new members have joined the Guild and our membership is now up to 250 members!

The Guild's educational classes are now beginning:  
Build a Frame & Cabinet Class is unfortunately completely full.

The Woodworking Fundamental Class has 23 participants and there is still room and time for more of you to sign up as due to unforeseen circumstances, we will have to start this class on March 4<sup>th</sup>.

The Designing of Building Chairs with Jeff Miller is scheduled for April 29<sup>th</sup> and 30<sup>th</sup>. Still plenty of room for you to join the class.

The Scroll Saw Workshop had 15 members attend this month. The most we have had. Thank you Cliff Daniels for teaching us how to do compound Scroll Sawing. It is a group that learns the fundamentals of scroll sawing and ways to enhance your skills. We welcome any members to attend. It meets every Monday after the monthly Saturday Guild General Meeting. Starts at 6 p.m. and ends around 8:30 or 9:00. No costs involved.

The "Hand Tools Workshop" teaches how to use hand tools. Meets every Thursday from 4:30-8:00 p.m. but you are welcome to come at your convenience. No costs involved.

**President:** Don Wilson  
**Vice Pres:** Patrick Murphy  
**Treasurer:** David Erikson  
**Secretary:** Steve Stutts  
**Webmaster:** Brian Stauss  
 (205)987-9997  
**Guild News:** Phillip Key  
**Board of Directors:** Joe Beck  
 Don Blackburn  
 John Dorough  
 Frank Higgins  
 Sandra McMillan  
 John Wilkes  
**Toy Co-Chairs:** Sandra McMillan  
 Bob Watkins  
**Education:** Ray Ziegler  
**WEC Shop Managers:** Pat Bush  
 Frank Higgins  
 Kenneth Graham  
**Librarian:** Ray Dunn

#### **GUILD PATRONS**

*We are very fortunate to have the following patrons who support the Guild. They are excellent suppliers of products or services in the local area that provide monetary support or allow us to use their various facilities for Guild functions:*

**J.R. PREWITT & ASSOCIATES, INC.** Independent Insurance Agent—Founded in 1974, J. R. Prewitt & Associates, Inc. is a family owned agency that has grown to one of the largest firms in the Birmingham area. Representing over a dozen insurance carriers, the agency provides a full spectrum of insurance services to over 3500 clients. From individuals to multi-state corporations, the agency prides itself on it's loyal, long term client base as a result of unparalleled customer service. Contact us for your personal, business, or professional insurance needs.  
 2146 Highland Ave. South,  
 Birmingham, AL 35205  
 Telephone (205)-933-9207  
 Fax (205)-930-0450

## President's Message

Toy Group meets every Tuesday from 9-2. Enjoy the fun of learning wood-working skills, how to use the shop power tools and the fun of making toys for needy children. All are welcome and no costs involved.

I look forward to seeing you at the meeting this month and may God Bless You All!

Don

## February Meeting Program: Marty Schlosser

This month's meeting will feature Marty Schlosser, a woodworker visiting us from Ontario, Canada. Marty has written for Canadian Woodworking and Home Improvement Magazine and the Lee Valley newsletter. His presentation should be interesting and informative.

You can see some of Marty's articles here:  
<https://www.canadianwoodworking.com/author/marty-schlosser>



## WEC FEBRUARY 2017 CALENDAR

Sun	Mon	Tue	Wed	Thu	Fri	Sat
Jan 1 1p ■ No Supervisor 1p ■ Shop Closed, Happy New Year!	2	3 9 ■ Over the Hill Gang - Toys I Shop CLOSE 9 ■ 9a-2:30p Shop Closed, Toy Group Work	4 6:30p ■ AWG Board Meeting 6:30p AWG Board Meeting	5 4:30p ■ 4:30p - 8:00p Hand Tool Workshop	6 9 ■ 9a-9p Shop Closed due to inclement weather 9 ■ No Supervisor 1p ■ No Supervisor 5p ■ No Supervisor	7 9 ■ 9a-5p Shop Closed due to inclement weather 9 ■ No Supervisor 1p ■ No Supervisor
8 1p ■ No Supervisor 1p ■ 1p-5p Steve Stuts, Supervisor 835-2010	9 9 ■ Over the Hill Gang - Toys I Shop CLOSE 9 ■ 9a-2:30p Shop Closed, Toy Group Work	10 9 ■ Over the Hill Gang - Toys I Shop CLOSE 9 ■ 9a-2:30p Shop Closed, Toy Group Work	11 9 ■ Over the Hill Gang - Toys I Shop CLOSE 9 ■ 9a-2:30p Shop Closed, Toy Group Work	12 4:30p ■ 4:30p - 8:00p Hand Tool Workshop	13 9 ■ No Supervisor 9 ■ 9a-1p Ron Powell 1p ■ No Supervisor 1p ■ 1p-5p Ron Powell 5p ■ No Supervisor 5p ■ 5p-9p Eddie Hearlen Supervisor	14 9 ■ No Supervisor 9 ■ 9a-1p Steve Stuts, Supervisor 835-2010 1p ■ No Supervisor 1p ■ Michael Malinconico, Shop Supervisor, 2
15 1p ■ No Supervisor 1p ■ Brian Stauss, Supervisor 205-335-724	16 1p ■ No Supervisor 1p ■ Brian Stauss, Supervisor 205-335-724	17 9 ■ Over the Hill Gang - Toys I Shop CLOSE 9 ■ 9a-2:30p Shop Closed, Toy Group Work	18 9 ■ Over the Hill Gang - Toys I Shop CLOSE 9 ■ 9a-2:30p Shop Closed, Toy Group Work	19 4:30p ■ 4:30p - 8:00p Hand Tool Workshop	20 9 ■ No Supervisor 9 ■ 9a-1p Patrick Murphy, Shop Supervisor 1p ■ No Supervisor 1p ■ 1p-5p Patrick Murphy, Shop Supervisor 5p ■ No Supervisor 5p ■ 5p-9p Ken Graham Supervisor	21 8 ■ 8a-9a SketchUp with Jeff Branch 9 ■ No Supervisor 9 ■ 9a-10a Mentoring Series Program 1p ■ Pre-Meeting 10 ■ 10a-12a Guild Membership Meeting, G 10 ■ Guild Meeting 1p ■ No Supervisor 1p ■ Michael Malinconico, Shop Supervisor, 2
22 1p ■ No Supervisor 1p ■ Brian Stauss, Supervisor 205-335-724	23 1p ■ No Supervisor 1p ■ Brian Stauss, Supervisor 205-335-724	24 9 ■ Over the Hill Gang - Toys I Shop CLOSE 9 ■ 9a-2:30p Shop Closed, Toy Group Work	25 9 ■ Over the Hill Gang - Toys I Shop CLOSE 9 ■ 9a-2:30p Shop Closed, Toy Group Work	26 4:30p ■ 4:30p - 8:00p Hand Tool Workshop	27 9 ■ No Supervisor 9 ■ R. Harlowick, Supervisor 1p ■ No Supervisor 1p ■ R. Harlowick, Supervisor 5p ■ No Supervisor 5p ■ 5p-9p No Supervisor Scheduled	28 9 ■ 9a-4p Frame and Panel Cabinet Build C 9 ■ No Supervisor 9 ■ 9a-1p No Supervisor Scheduled 1p ■ No Supervisor 1p ■ 1p-5p Cliff Daniels Supervisor
29 1p ■ No Supervisor 1p ■ 1p-5p Steve Stuts, Supervisor 835-2010	30 1p ■ No Supervisor 1p ■ 1p-5p Steve Stuts, Supervisor 835-2010	31 9 ■ Over the Hill Gang - Toys I Shop CLOSE 9 ■ 9a-2:30p Shop Closed, Toy Group Work	Feb 1 6:30p ■ AWG Board Meeting 6:30p AWG Board Meeting	2 4:30p ■ 4:30p - 8:00p Hand Tool Workshop	3 9 ■ No Supervisor 9 ■ 9a-1p Patrick Murphy, Shop Supervisor 1p ■ No Supervisor 1p ■ 1p-5p Patrick Murphy, Shop Supervisor 5p ■ No Supervisor 5p ■ 5p-9p No Supervisor Scheduled	4 9 ■ 9a-3p Woodworking Fundamentals Class 9 ■ No Supervisor 9 ■ 9a-1p Steve Stuts, Supervisor 835-2010 1p ■ No Supervisor 1p ■ No Supervisor

*The most current WEC calendar is always available on-line at: <http://wp.wwg.info/calendar/>*

**CITY HARDWOODS** located in beautiful Birmingham, Alabama. We are your source for domestic and exotic hardwood lumber for the hobbyist, architect, crafter, or decorator. All of our hardwoods have been hand selected to ensure the highest quality for each species. City Hardwoods offers wood sold by the board foot, turning blanks, live edge slabs, cabinet-grade plywood, carving stock, craft wood, and the best woodworking classes in town. Stop by to meet our friendly and knowledgeable staff and take your woodworking project to the next level. City Hardwoods, 430 Industrial Lane, Birmingham, AL 35211  
cityhardwoods.com

**THE AWARDS & ENGRAVING PLACE** is a full service engraving shop, offering both laser and flatbed rotary engraving. We engrave directly on wood, glass, plastic, and a variety of coated metals. We offer plaques, glass and acrylic awards, trophies, interior signs and name badges. We have been in business in Hoover since 1987. Contact Ken Murer, The Awards & Engraving Place, 1919 Hoover Court, Birmingham, AL 35226, (205)-823-7676 fax(205)-822-1111

**AFFORDABLE WOOD TOOLS by Paul Varden**  
Wood Lathe accessories to fit any size wood lathe. Screw Chucks, Face Plates and Tool Rest. General Machining also available. Paul Varden-Master Machinists-35 years of experience.  
7029 Dickey Springs Road  
Bessemer, AL 35226  
H-205-428-9945  
C-205-908-9945  
email-paul2010@directv.net

**SARA'S TAX SERVICE**  
100 Foust Avenue, Hueytown, AL 35023  
205-497-4020 Fax 205-497-4011

**SNOW'S SHARPENING SERVICE** Ed Snow can take care of all of your saw blade sharpening needs. You can leave and pick up your blade at Woodcraft or you can contact Ed at 205-218-1885 or redsnow\_3@hotmail.com

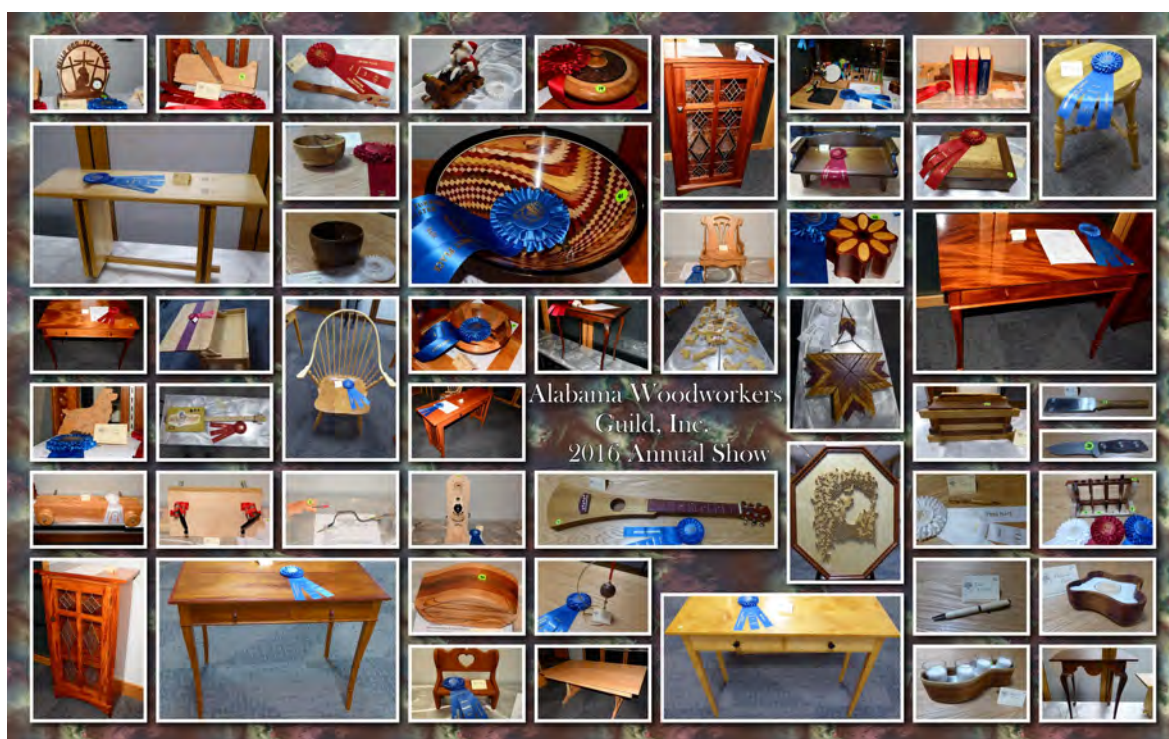
**WOODCRAFT** Helping you make wood work.  
www.woodcraft.com  
205-988-3600



## Congratulations Annual Show Winners

Congratulations to People's Choice Award Winner Dwight Hostetter and all the other winners in last year's Annual Show!

It's not too early to start working on your entry for this year's show!



## Mentoring

NOTE: You must be a member of the Guild to be eligible to participate in mentoring classes.

Are you an intermediate or beginner woodworker with an itch to raise your woodworking skills a notch or two? Do you have a special project in mind, but are just a bit uneasy about getting underway? Looking for tips to save time and effort, plus get better results?

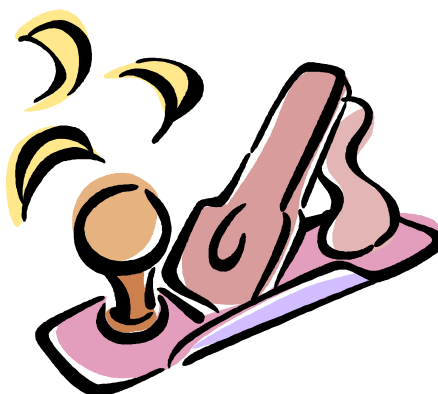
Here's what you need to do: join a Guild mentored group now. It's the way to go for all of the above with others at your skill level, and best of all, at no cost except for materials.

**Refer to Shop Schedule for schedule of mentoring sessions**

**Some examples of topics offered:**

Bench Making  
Table Saw instruction  
Lathe Fundamentals  
Pen Turning  
Hand Tools - sharpening and techniques  
Furniture Building - Chairs, Table tops, Tables  
Instruction in - Router table use  
Instruction in - Jointer, Planer use  
Dovetail jig making  
Hand-cut Dovetails  
Pocket Hole Jig Instruction

**If you have questions on woodworking technique, tool usage, or buying equipment or tools, feel free to contact a Guild mentor.**



Jim Woodward	Guitars
Ed Bullock	Bows
John Lawson	Furniture repair, band saw, track saw
Mike Key	Dovetail jig
Bob Moore	Hand tool sharpening, table saw, joiner, planer
Dwight Hostetter	Lathe, segmented turning, baskets
Brian Stauss	Cabinet construction
Cliff Daniels	Scroll saw, jointer, band saw
Buzz Kelly	Finishing and stringing
Lynn Smith	Toys
Pat Bush	Jointer, planer
A.R. Bray	Draw knife, planes, hand tools, antique hand tools
Preston Lawley	Cutting Boards
Jeff Hood	Scroll Saw
Michael Malinconico	Cabinetry, CAD and Joinery
David Holcomb	Project Photography
Steve Stutts	Scroll Saw



Contact the above by email or phone as listed in the Membership Directory.

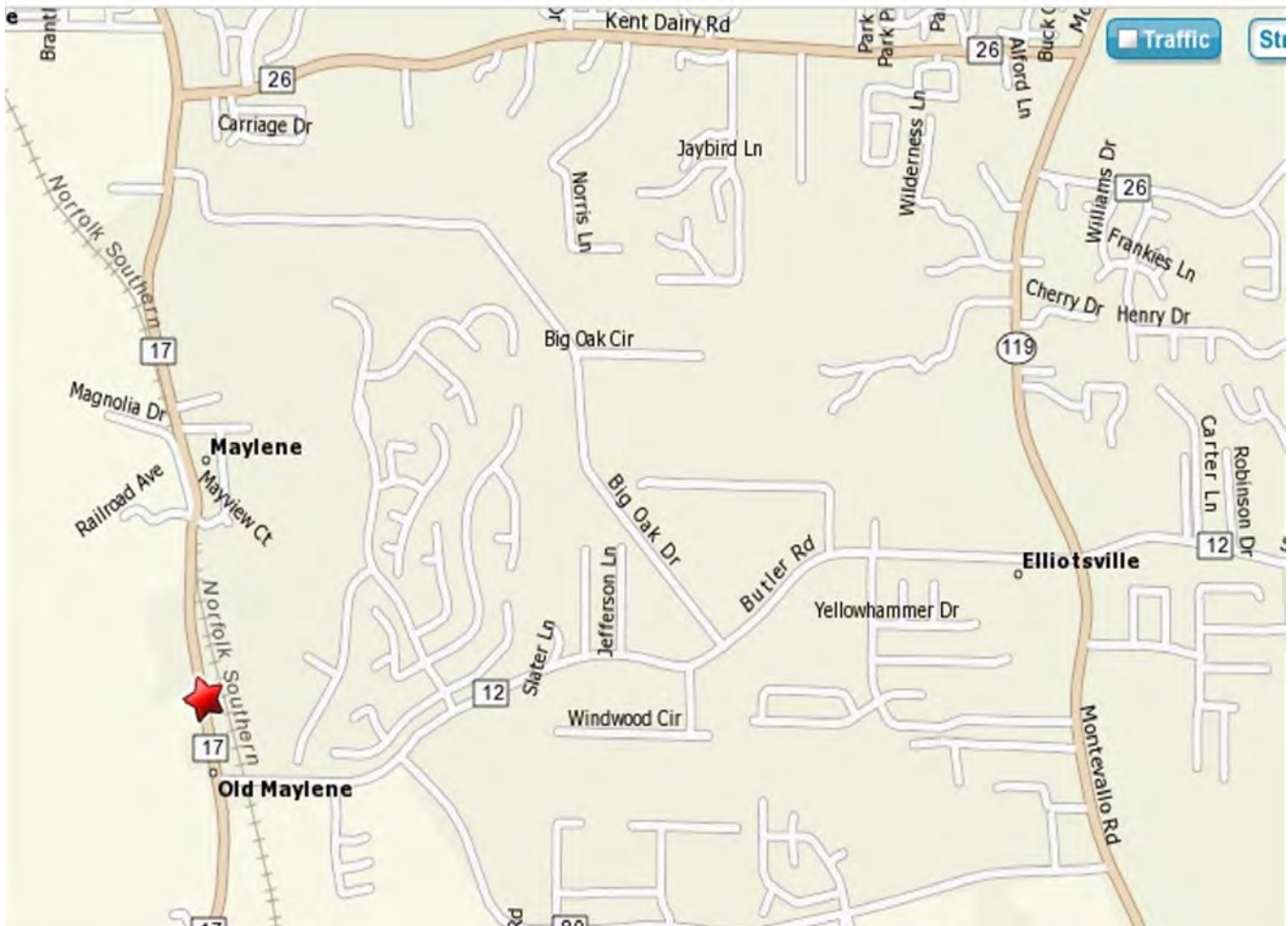
Mr. Tad Lidikay and Mr. Jeff Lidikay  
Southland Wood Products, Inc.

Hardwood and Softwood —  
Moulding and Dimension  
270 Newsome Road  
Wilsonville, AL 35186  
Phone/Fax: 205-669-1959

## Bring a Friend To This Month's Meeting!

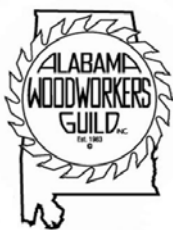
**Don't forget that the Mentoring Series and General Meeting are always open to the public, so bring a friend who might be interested in joining the Guild!**

## Directions to the Woodworkers Education Center (WEC)



**From I-65**, take Exit 238 (Highway 31). Turn north on U.S. Highway 31, go 0.6 miles and turn left on State Highway 119 South. Go 3.0 miles south on Highway 119 and turn right on County Highway 12. Go 2.1 miles on Highway 12 until it ends at County Highway 17. Turn right on Highway 17 and the WEC is 0.3 miles on your left. There is a large WEC sign at the entrance.





www.  
alabamawoodworkersguild  
.org

## About Us

Alabama Woodworkers Guild Newsletter is published monthly for its members and other interested parties. Guild meetings are held monthly on the third Saturday at 9:00 a.m. at the Woodworking Education Center, 10544 Hwy 17, Maylene, AL 35114

Information concerning the Guild may be secured by calling **Walter Barnett** at (205) 933-9207.



# WOODCRAFT<sup>®</sup>

**Helping You Make Wood Work<sup>®</sup>**

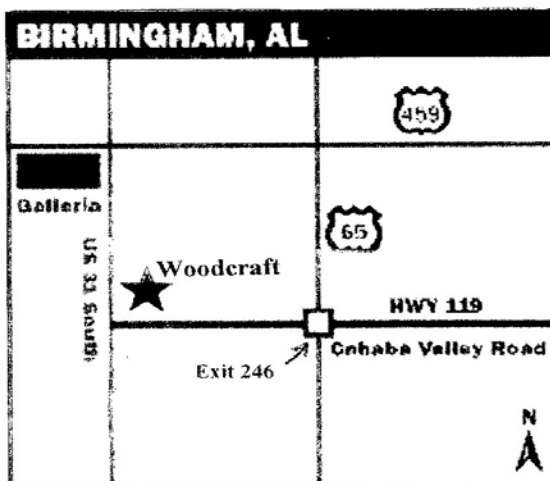
**Phone** 205-988-3600  
**Fax** 205-988-3612  
**Website:** www.woodcraft.com  
**e-mail:** WC511@aol.com

### Store Hours

M - T - W - F: 9AM - 7PM  
Th: 9AM-9PM  
Sat: 9AM-6PM  
Sun: Noon-5 PM

### Our new address is:

2215B Pelham Parkway  
Pelham, AL 35124



### Directions:

Take I-65 to Exit 246.  
Take Highway 119 West (Cahaba Valley Road) 3/4 of a mile to US 31.  
Turn right on US 31 and travel north approx. 0.3 mi.  
Our store is on the right (east) side of US 31.

The Alabama Woodworkers Guild, Inc.  
P.O. Box 36804  
Birmingham, AL 36236

