

Guild News

VOLUME XXVII NUMBER 2

FEBRUARY 2008

President: Mike Key
(205)663-9036

Vice Pres: A. R. Bray
(205)969-3753

Treasurer: Walter Barnett
(205)933-9207

Secretary: Monta King
(205)664-7444

Webmaster: Brian Stauss
(205)987-9997

Guild News: Nelda Kelly
(205)733-1258

Board of Directors:
Jim Caldwell
Eddie Heerten
Jeff Hood
John Lawson
Troy Stroud
Tom Surtees
Michael Tomlin

Toy Chair: Buddy Finch
Show Chair: Paul Mancill

President's Message

I never fail to be amazed at my fellow Guild members. Many of you have rolled up your sleeves and pitched in to help as we work to get our Woodworking Center in Maylene up and running. We have come a long way in a short time but there is still much work to do. Try to join us for our next work day scheduled for February 16th (see page 2 for details).

The Board appointed a Coordination Team to lead the efforts at the Woodworking Center. They are **Bill Newman, John Lawson, Buzz Kelly and John Gasque.** (see Bill's Start Up Plan on page2) Another team (**Cliff Daniels, Glenn Phillips, and Nelda Kelly**) was appointed to design and create a sign for the center.

With all the buzz about the woodworking center, we haven't forgotten about all our other endeavors. Plans are underway for our Annual Hot Dog Dinner and Silent Auction in May. **Paul Mancill** is making plans for our Annual Show in the fall. **Buddy Finch** and the Fridays at Woodcraft Group have already made between 275 and 300 toys this year. They are also working to complete the 60 game boards requested by the Alabama Institute for the Deaf and Blind. In just another couple of weeks the boards will be ready for **Dan Browning** to spray.

Jim Caldwell has lined up two seminars (Glen Huey and Craig Satterly) and a couple of already full classes (**John Lawson's** Table Class and **Buzz and Nelda's** Stringing Class). **Jim** has plans for a basket class in April or May and more. Let him know if there is something special on your wish list.

I'm looking forward to us making some sawdust together! **Mike**

***Dwight Hostetter** will talk to us about his wonderful Nantucket Light House baskets during our pre-meeting program in February. You won't believe all the woodworking skills it takes to make just one of these baskets!*

Next Meeting
February 20th
Pre-meeting Demo
5:30 PM
Meeting 6:30 PM
Don't forget your
Show and Tell

Inside this issue:

Start Up Plan AWG Shop	2
Glen Huey Seminar May 2008	2
Up Coming Maylene Work Day	2
Work Day Pictures	3
A Day With David Marks	4
Items for Sale	4
Meeting Directions	5

February 2008 Two Programs in One

John Lawson is going to discuss "riving knives", their availability, and what it will mean to the tablesaw market. If you are considering the purchase of a table-saw, don't miss this discussion.

Next **Luke Weertz** will present the computer program, "Easycab", explaining how it is used, to include making a cut list for materials. According to www.easycab.com, it is a "3D Woodworking software program for designing cabinets, kitchens and bathrooms....the most complete cabinet design software available."

*Thanks to Brian Stauss
New 2008 Directories will be available at the February meeting.*

Start-up Plan of the AWG shop Maylene, AL

Preface: The Shop at Maylene is advancing toward functionality. The basic cleanup work has been accomplished. Most of the trim work has been completed and the painting is well under way. Thanks to many hours of work by volunteers, the operation of the shop is in sight, but much work remains to be done. Some specific responsibilities for the completion of the shop have been set. Many other areas remain to be coordinated before the shop can be opened for use by the guild members.

A team has been named to ensure the coordination of the necessary work to complete the shop and make it ready for use. The Coordination Team members are: **John Gasque, Buzz Kelly, John Lawson** and **Bill Newman**.

Some items remaining to be accomplished are:

- Complete the interior painting of the building
- Complete the installation of the trim
- Install lighting (**Charlie Ard** has the lead on this)
- Determine stationary tools & lumber storage location
- Install the receptacles/connections for power tools
- Complete wiring (**Charlie Ard** lead)
- Check floor structure to ensure support for tools
(the jointer is probably the greatest concern)
- Finish floors in shop and the kitchen/office area
- Install stationary tools in the shop
(table saw(s), jointer, planer, etc)
- Install the lumber storage rack/system
- Install HVAC (**Charlie Ard** lead)
- Install dust collection system (**Charlie Ard** lead)
- Complete tile work & cabinet installation in bathroom adjacent to the shop
- Installation of a water heater (?)
- Selection of a shop manager

Many of these items have been discussed and much of the planning is in place. Steps and schedule need to be documented. Items on a critical path to completing the shop and must be performed in a particular sequence (such as the installation of the lighting need to be addressed before the floors are finished so that the floors are not scratched by moving scaffolding around).

As we move toward completion, it will be useful to have a written plan so that each step can be coordinated with other steps. A written sequence of steps will help to ensure that each responsible person can plan how to accomplish his/her work. The Coordination Team will be the keeper of the plan for completion of the shop. Many people will have input into the completion plan, but one official plan will be maintained so that it can be communicated to all who are interested and/or need it to complete their work.

Glen Huey Seminar Friday & Saturday May 16 & 17, 2008

Inlay and Construction Techniques as Applied to Period Furniture

Glen Huey is a Senior Editor on the staff of Popular Woodworking, the author of several books on woodworking, the host on a series of DVDs and a woodworking teacher. He regularly builds projects for Popular Woodworking Magazine and heads up all product testing.

Born and raised in Ohio, he and his wife Laurie live in Liberty Township, Middletown, Ohio. Glen has been making furniture for over 25 years. He specializes on 18th and 19th century reproduction furniture continuing the work of his father, Malcolm L. Huey.

Examples of his work can be seen at <http://woodworkersedge.com>. Articles authored by Glen regularly appear in Popular Woodworking Magazine and several are available on the magazine's web site <http://popularwoodworking.com>.

UPCOMING Maylene Work Day February 16, 2008 Breakfast at 7:00 AM

We'll be lighting the place up! **Charlie Ard** has promised to cook breakfast for folks showing up to help him hang lights in the Woodworking Center on February 16th. **Charlie** got the lights donated and **Mike Key** has donated chains and S hooks. We need workers to help get the lighting installed. There's also lots of other work for willing hands. *We're trying to get the place fixed up and equipment moved in so we can be ready to host the Glen Huey Seminar at the Woodworking Center on May 16th.*

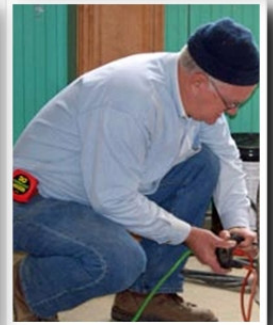
Thanks for the Successful Workdays at the Woodworking Center!!!!

We offer a special "Thanks" to all those who have worked so hard to make our shop ready! **A. R. Bray** has done a fine job of leading the effort to make the needed carpenter repairs to the building. He has enjoyed help from many skilled, hard working members working like Trojans.

A. R. scheduled 6 or 7 workdays in January with as many as 20 members participating on a given day – all total there were about 60 man-days of work. Some members even took time away from their work to help. Thanks to each and every one of you!



MAYLENE



Photos by **Monta King**, Guild Photographer

A Day with David Marks



The Greenville Woodworkers Guild has invited us to participate in The Annual Master Series, presented by the Greenville Woodworkers Guild, "A Day with David Marks".

It begins with a reception Friday night, April 4, at the shop of Bobby Hartness. This event is similar to the one held last year for Sam Maloof. Admission is \$100 per person and includes dinner.

The David Marks Seminar will be Saturday, April 5, starting at 9am, and ending mid to late afternoon. The program will consist of marquetry and inlay followed by a screen presentation of David's work, and a session on gilding and patination.

This year's venue will be Center Stage, at 501 River Street (the Smith-Barney building) in downtown Greenville. This theater has stadium seating. Every seat is a good one, as there are only 7 rows. The seating capacity of this venue is half the size of the one for Sam Maloof, so buy your tickets early.

Tickets are available starting March 4 by calling Centre Stage at 864-233-6733.

Preferred seating \$125, General admission \$75

Directions to Maylene School House, Home of AWG Woodworking Center

From I 65 South
Take **exit 238** for US31 toward Saginaw/Alabaster.
Turn **right at US31 N**,
Turn **left on AL 119/Montevallo Rd**
Turn **right on CR26/Kent Dairy Rd**
Turn **left on CR17**
Go past railroad tracks
Look for school house **on your right** (about 2 blocks)

Items for Sale

JET Special Edition contractor's saw with 30" Xacta fence. Has two cast iron wings and a table between the rails to allow for a 30" cut to the right of the blade. Mounted on an HTC roller base which cost more than \$100. Will include two new micro jig splitters (thin and regular kerf) and a couple of zero clearance plates. This is an excellent saw, used very little (less than 20 hours). \$485 for the package.

Troy Stroud, 205-670-9267, tandr41@sbcglobal.net

Mini Max 250 Cabinet Table Saw, 3hp 220V Motor Sliding table on right, extension table on left. 10" blade with scoring blade for paneling. \$500 or best offer

Jim Lee (205) 478-3607

Scholarships Available

Did you know about our scholarship program? We make funds available to reimburse up to 1/2 tuition (up to \$200) for a woodworking class at a qualified woodworking school. See **Jim Caldwell** for details.

Exciting Times!

Here in our 25th Anniversary Year, one of our dreams as a Guild is coming true. Soon we will have a place where we can make noise and sawdust without bothering anyone. We have always been dependent upon the kindness of others when we wanted to get together to work on a project, hold a seminar or teach a class. We've used tools that belonged to someone else and worked around the schedules of others. **Ronnie Acton**, Bo Thuston, Tom Nequette, **Jim Lee**, **Shane Carter**, and **John Lawson** have all hosted us as we dreamed of having our own space.

Working with Habitat for Humanity, we have been able to lease a building for almost nothing. *"We have been given a glorious, and I don't use that word lightly, building (almost) for free and all we have to do is care for it and respect it for its historic beauty."* We are just required to invest sweat equity and some of our building fund in upgrades so that we can be comfortable and run our equipment.

If you haven't already made a pledge to the building fund, or aren't able to invest sweat equity, please consider making a tax deductible donation. Every little bit helps!

Guild Patrons

We are very fortunate to have the following patrons who support the Guild. They are excellent suppliers of products or services in the local area that provide monetary support or allow us to use their various facilities for Guild functions:

The Dogwood Institute School of Fine Woodworking
Offers woodworking classes for beginner to advanced woodworkers on various topics with concentration on teaching the "Process" of making furniture. Our signature courses on *Foundations for Fine Woodworking*, has been extremely popular and guides the student through a series of Foundations Courses to prepare them for building quality furniture. Other courses include veneering, turning, finishing and project classes. Next year the school is expanding facilities/courses and will offer several weeklong courses. All courses are taught by master craftsmen with a vast amount of experience in different areas of expertise. Courses are conducted in our spacious horse farm in Alpharetta, GA featuring two large fully equipped barns including a turning studio & steam bending equipment. The environment lends to learning woodworking skills in a pleasant surrounding. Our mission: "To provide quality instructional courses to individuals who are interested in furthering their knowledge of woodworking at all levels of interest and skill." 1640 Mid-Broadwell Rd, Alpharetta, GA 30004 (770)-751-9571 www.dogwoodwoodworking.com

Charter Fire Systems, Inc Shawn O'Brien & David Pavey have served as valuable advisors to the Guild relative to fire safety issues. If you or your business have need for fire protection or inspection in the future please consider using Charter Fire Systems. (205) 982-3301

J.R. Prewitt & Associates, Inc. Independent Insurance Agent—Founded in 1974, J. R. Prewitt & Associates, Inc. is a family owned agency that has grown to one of the largest firms in the Birmingham area. Representing over a dozen insurance carriers, the agency provides a full spectrum of insurance services to over 3500 clients. From individuals to multi-state corporations, the agency prides itself on it's loyal, long term client base as a result of unparalleled customer service. Contact us for your personal, business, or professional insurance needs. 2100 17th Ave. South, Birmingham, AL 35205 Telephone (205)-930-9207 FAX (205)-930-0450

Paul Mancill, Realtor Residential, land, & commercial (205)-706-6252

Max Tool, Inc. is a distributor of cutting tools, abrasives, MRO and machine shop supplies. Founded in 1985, we are located in Birmingham, Alabama. Max Tool represents the product lines of many of industry's foremost manufacturers from around the world.. 119 B Citation Court, Birmingham, AL 35209 (205) 942-2466 www.maxtoolinc.com

The Awards & Engraving Place is a full service engraving shop, offering both laser and flatbed rotary engraving. We engrave directly on wood, glass, plastic, and a variety of coated metals. We offer plaques, glass and acrylic wards, trophies, interior signs and name badges. We have been in business in Hoover since 1987. Contact Ken Murer, The Awards & Engraving Place, 1883 Hoover Court, Hoover, AL 35226, (205)-823-7676 fax (205)-822-1111

Woodcraft The Woodcraft franchise in Pelham, AL is independently owned by Tom and Kathy Nequette. It is a local business and Tom's full time occupation. It depends upon its well being by fostering and maintaining as high a level of relationships as possible with all of our customers. Beyond that it is imperative for the store to enhance and promote woodworking in all of its forms. The Alabama Woodworker's Guild is an integral part of these goals. Not only do we value the members as customers but we value what the Guild represents and brings to our community. We believe in supporting the Guild, its growth and its members. We thank you for your patronage and your friendship. (see our ad page 6)

Commercial Heating and Air, Charlie Ard

ABC 33/40 - Alabama's TV News Leader

Our thanks to local television station **ABC 33/40** and videographer, **Bill Castle**, for their support of the community activities of the Alabama Woodworkers Guild.

Mel Brown would like you to know that DVDs are available at www.bama4u.org/video.htm. A wide variety of topics for Woodworkers and Woodturners. We often forget all the details given by the demonstrator by the time we get home. Guild members get a special price for only \$10 for each DVD which includes postage.

Keep Your Tools Sharp!

Fred Sandlin, an AWG member who owns and operates a professional sharpening service, will pick-up your saw blades and other tools at each meeting, sharpen them, and return them to you the following month.

Fred's charge for this service is at his standard rates less a 5% discount for Guild members.

Call **Fred** at (205) 663-7524 to coordinate pick-up & de-

Meeting Directions:

Homewood Senior Center 816 Oak Grove Road **Homewood, AL**

From I65 South, take the West Oxmoor exit, merge into center lane. Go through 2 lights. When in doubt, merge left. At the 3rd light (Florida Grill and Weygand Surveyors) take a left. Go to the black mail box and turn right into Senior Center property. The center has a green roof. (205) 943-0018

From I65 North, take the Oxmoor Road exit. Turn left. Go under interstate (3 lights). When in doubt, merge left. At the 3rd light (Florida Grill and Weygand Surveyors) take a left. Go to the black mail box and turn right into Senior Center property. The center has a green roof. (205) 943-0018.

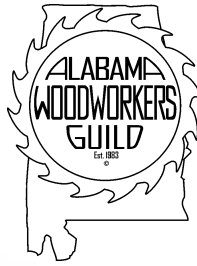


**Hardwoods, Inc.
Of Alabama
800-467-4160**

Open 8 am - 5 pm, Mon. - Fri.
Open 8 am - 12 pm Sat.
WALK-INS WELCOME

180 Airview Lane
Alabaster, AL 35007

www.hardwoodweb.com

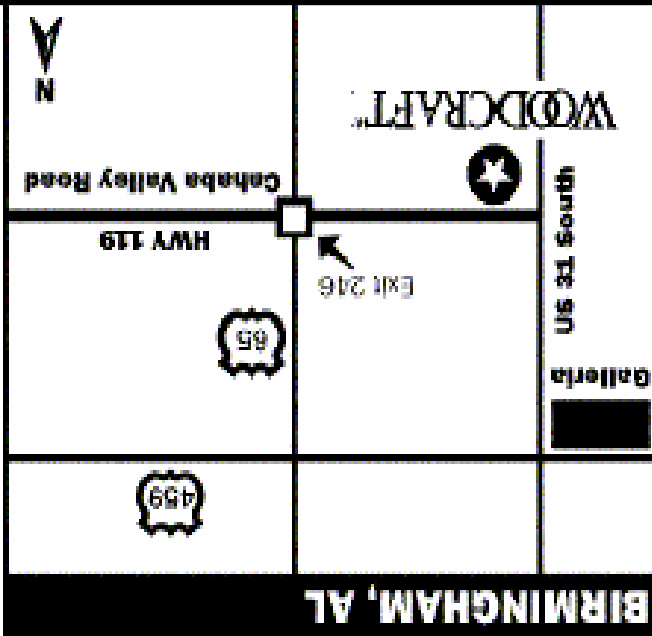


*The Alabama Woodworkers
Guild, Inc.
P.O. Box 26665
Birmingham, AL 35260*

About Us

Alabama Woodworkers Guild Newsletter is published monthly for its members and other interested parties. Guild meetings are held monthly on the third Thursday at 6:30 p.m. at the Homewood Senior Center, 816 Oak Grove Road, Homewood, AL.

Information concerning the Guild may be secured by calling **Walter Barnett, Treasurer** at (205) 933-9207.
Our Webmaster is **Brian Stauss**. See our website at: www.alabamawoodworkersguild.org
Contact our **Guild News Editor** at nelbuz@msn.com.



Store Hours
M - T - W - F: 9AM - 7PM
Th: 9AM-9PM
Sat: 9AM-6PM
Sun: Noon-5 PM

Phone 205-988-3600
Fax 205-988-3612
Website: www.woodcraft.com
e-mail: WC511@aol.com

Directions
Take I-65 to Exit 246.
Take Highway 119 West (Cahaba Valley Road)
3/4 of a mile. We are located on the left.
in the Cahaba Valley Station.

WOODCRAFT
Helping You Make Wood Work

